

BALDOR® • RELIANCE 

Product Information Packet

CFSWDM3713T-E

15HP,3500RPM,3PH,60HZ,215TC,3756M,TEFC,F

Part Detail							
Revision:	K	Status:	PRD/A	Change #:		Proprietary:	No
Type:	AC	Elec. Spec:	37WGR515	CD Diagram:	CD0180	Mfg Plant:	
Mech. Spec:	37Q242	Layout:	37LYQ242	Poles:	02	Created Date:	08-03-2017
Base:	RG	Eff. Date:	07-07-2020	Leads:	9#14		

Specs			
Catalog Number:	CFSWDM3713T-E	Insulation Class:	H
Enclosure:	TEFC	Inverter Code:	Not Inverter
Frame:	215TC	KVA Code:	L
Frame Material:	Stainless Steel	Lifting Lugs:	Standard Lifting Lugs
Output @ Frequency:	15.000 HP @ 60 HZ	Locked Bearing Indicator:	Locked Bearing
Synchronous Speed @ Frequency:	3600 RPM @ 60 HZ	Motor Lead Quantity/Wire Size:	9 @ 14 AWG
Voltage @ Frequency:	460.0 V @ 60 HZ	Motor Lead Exit:	Ko Box
	230.0 V @ 60 HZ	Motor Lead Termination:	Flying Leads
XP Class and Group:	None	Motor Type:	3756M
XP Division:	Not Applicable	Mounting Arrangement:	F1
Agency Approvals:	UR	Power Factor:	90
	CSA EEV	Product Family:	WD All SS Encapsulated
	CSA	Pulley End Bearing Type:	Sealed Bearing
Auxillary Box:	No Auxillary Box	Pulley Face Code:	C-Face
Auxillary Box Lead Termination:	None	Pulley Shaft Indicator:	Standard
Base Indicator:	Rigid	Rodent Screen:	None
Bearing Grease Type:	Polyrex EM (-20F +300F)	RoHS Status:	ROHS COMPLIANT
Blower:	None	Shaft Extension Location:	Pulley End

Current @ Voltage:	17.000 A @ 460.0 V	Shaft Ground Indicator:	No Shaft Grounding
	34.000 A @ 230.0 V	Shaft Rotation:	Reversible
	37.000 A @ 208.0 V	Shaft Slinger Indicator:	No Slinger
Design Code:	A	Speed Code:	Single Speed
Drip Cover:	No Drip Cover	Motor Standards:	NEMA
Duty Rating:	CONT	Starting Method:	Direct on line
Electrically Isolated Bearing:	Not Electrically Isolated	Thermal Device - Bearing:	None
Feedback Device:	NO FEEDBACK	Thermal Device - Winding:	None
Front Face Code:	Standard	Vibration Sensor Indicator:	No Vibration Sensor
Front Shaft Indicator:	None	Winding Thermal 1:	None
Heater Indicator:	No Heater	Winding Thermal 2:	None

Nameplate NP1953K02											
CAT.NO.	CFSWDM3713T-E										
SPEC.	37Q242R515G1										
HP	15										
VOLTS	230/460										
AMPS	34/17										
R.P.M.	3500										
FRAME	215TC			HZ	60			PH	3		
SER.F.	1.15		CODE	L		DES.	A		CLASS	H	
NEMA NOM. EFF.	91.7			P.F.	90						
RATING	40C AMB-CONT										
CC	010A			USABLE AT 208V							37
DE	6307			ODE	6307						
ENCL	TEFC		SN								
	4:1CT, 10:1VT										

Parts List		
Part Number	Description	Quantity
SA348764	SA 37Q242R515G1	1.000 EA
RA337347	RA 37Q242R515G1	1.000 EA
36FN3000A02SP	EXFN, PLASTIC, 7.00 OD, 1.175 ID	1.000 EA
37CB1012A01	37 MACH. MID SECTION - 3 PC. CONDUIT BOX	1.000 EA
10XN1032FS08	HEX HD CAP SCREW 10-32 X 1/2 SS FOOD SAF	3.000 EA
11XW1032G08	10-32 X .50, TAPTITE II, HEX WSHR SLTD U	1.000 EA
HW3001B01	BRASS CUP WASHER, FOR #10 SCREW	1.000 EA
37EP1920A03	FREP, TEFC MACH - 307 BRG WD11/12 (STAIN	1.000 EA
RM1070A48	O-RING, .070 C.S. X 8.656 ID, VITON	1.000 EA
HW4600F35	35 X 52 X 8 LIP SEAL, GRAPHITE INFUSED V	1.000 EA
HW4600F34	35 X 53 X 4.5 AFX SEAL, GRAPHITE INFUSED	1.000 EA
HW4500S33	1/8 NPT STAINLESS #304 SS PLUG	3.000 EA
HA4002A03	#304 S.S. DRAIN FITTING, .125 NPT (.44 H	1.000 EA
HW5100A08	W3118-035 WVY WSHR (WB)	1.000 EA
37EP1925A01	PUEP, MACH - 307 BRG WD11/12 (STAINLESS)	1.000 EA
RM1070A48	O-RING, .070 C.S. X 8.656 ID, VITON	1.000 EA
HW4600F35	35 X 52 X 8 LIP SEAL, GRAPHITE INFUSED V	1.000 EA
HW4600F34	35 X 53 X 4.5 AFX SEAL, GRAPHITE INFUSED	1.000 EA
HW4500S33	1/8 NPT STAINLESS #304 SS PLUG	3.000 EA
HA4002A03	#304 S.S. DRAIN FITTING, .125 NPT (.44 H	1.000 EA
RM1070A47	O-RING, -011 VITON/FKM .070CS X .301ID	4.000 EA
11XB1214S16	12-14X1.00 HXWSSLD TYP B STAINLESS	1.000 EA
37FH4000A45	STAINLESS FAN COVER, NO GREASER SLOT (FO	1.000 EA
10XN1032FS06	HEX HD CAP SCREW 10-32 X 3/8 SS FOOD SAF	3.000 EA

Parts List (continued)		
Part Number	Description	Quantity
35CB1511A01	35-36-37 MACH. LID - 3 PC. CONDUIT BOX	1.000 EA
RM1070A81	O-RING, -043 VITON/FKM .070CS X 3.489ID	1.000 EA
RM1070A81	O-RING, -043 VITON/FKM .070CS X 3.489ID	1.000 EA
HW2502F21	#303 SS,SQ KEY 5/16 X 2.375	1.000 EA
HA7000A02	KEY RETAINER RING, 1 1/8 DIA, 1 3/8 DIA	1.000 EA
MJ5001A27	32220KN GRAY SEALER *MIN BUY 4 QTS=1GAL	0.005 QT
MJ5004A93	FOOD GRADE (H1 RATED) ANTISEIZE THRD COM	0.005 EA
MJ1000A02	GREASE, MOBIL POLYREX EM - 124047	0.050 LB
WD5603A01	KIT, CLOSED-END LEAD SPLICE (18-14GA)	1.000 EA
HA3104FS31	THRUBOLT, 5/16-18 X 15.875 SS FOOD SAFE	4.000 EA
37PA1074	PALLET PACK GRP, PRINT BOX PK1026A06	1.000 EA
MN416A01	TAG-INSTAL-MAINT no wire (1200/bx) 3/19	1.000 EA
HA5027A07	85XU1208S08 FACE DRAIN PINS BAGGED	1.000 EA
FE-0000002	ZRTG FE ASSEMBLY	1.000 EA
PE-0000002	ZRTG PE ASSEMBLY	1.000 EA
PE-0000002	ZRTG PE ASSEMBLY	1.000 EA
PE-0000002	ZRTG PE ASSEMBLY	1.000 EA
PE-0000002	ZRTG PE ASSEMBLY	1.000 EA

AC Induction Motor Performance Data

Record # 43026 - Typical performance - not guaranteed values

Winding: 37WGR515-R001	Type: 3756M	Enclosure: TEFC
-------------------------------	--------------------	------------------------

Nameplate Data				460 V, 60 Hz: High Voltage Connection	
Rated Output (HP)	15			Full Load Torque	22.4 LB-FT
Volts	230/460			Start Configuration	direct on line
Full Load Amps	34/17			Breakdown Torque	129 LB-FT
R.P.M.	3500			Pull-up Torque	62.1 LB-FT
Hz	60	Phase	3	Locked-rotor Torque	81.4 LB-FT
NEMA Design Code	A	KVA Code	L	Starting Current	187 A
Service Factor (S.F.)	1.15			No-load Current	5.43 A
NEMA Nom. Eff.	91.7	Power Factor	90	Line-line Res. @ 25°C	0.42167 Ω
Rating - Duty	40C AMB-CONT			Temp. Rise @ Rated Load	78°C
S.F. Amps				Temp. Rise @ S.F. Load	96°C
				Locked-rotor Power Factor	30
				Rotor inertia	0.512 LB-FT ²

Load Characteristics 460 V, 60 Hz, 15 HP

% of Rated Load	25	50	75	100	125	150	S.F.
Power Factor	59	82	87	90	92	93	91
Efficiency	88.1	92	92.4	91.9	91.1	89.9	91.4
Speed	3575.6	3551.4	3525.1	3498.7	3469.7	3437.4	3481
Line amperes	6.71	9.36	13.1	16.9	20.8	25.3	19.2

Performance Graph at 460V, 60Hz, 15.0HP Typical performance - Not guaranteed values

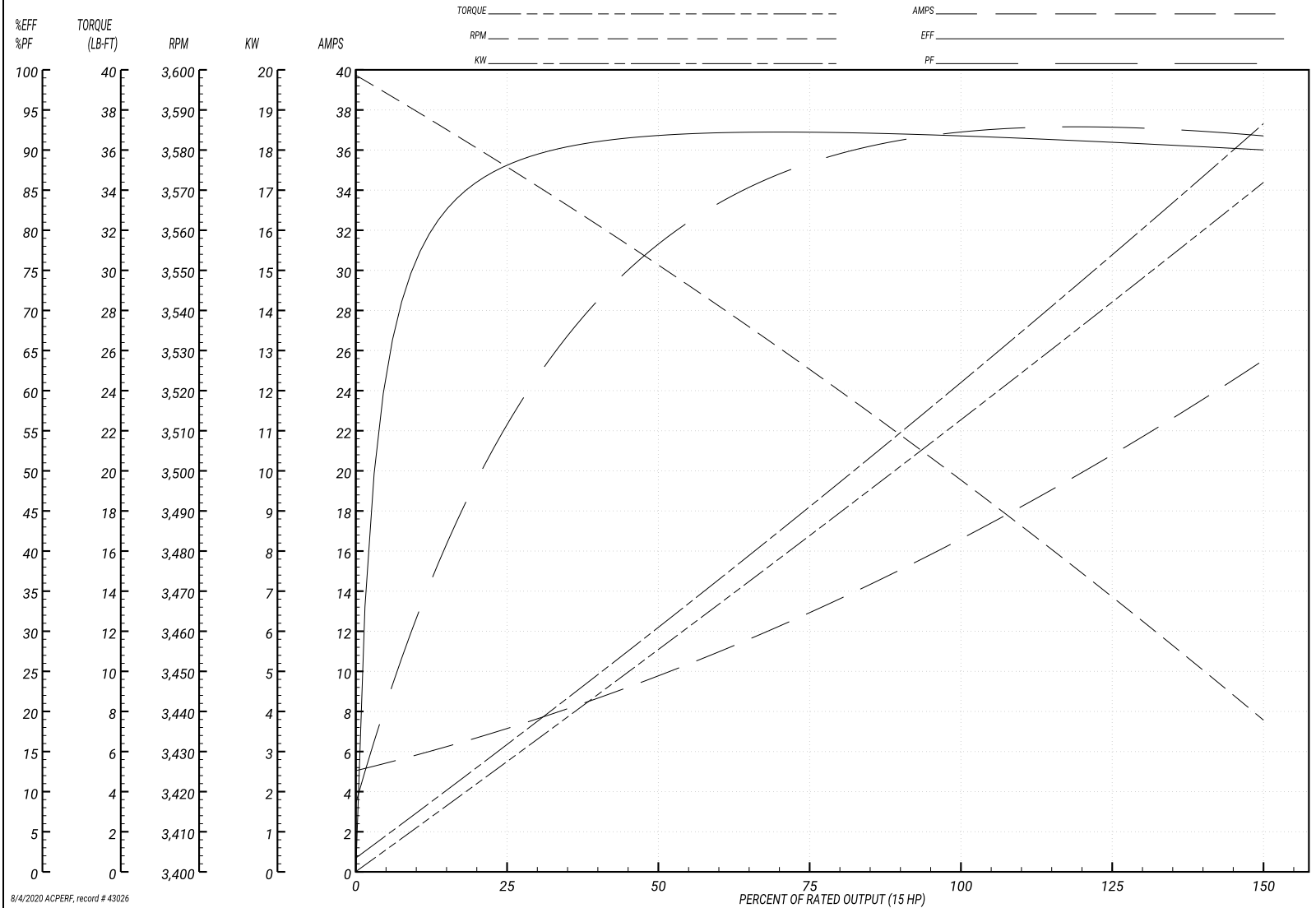
ABB Motors and Mechanical Inc.

WINDING # 37WGR515

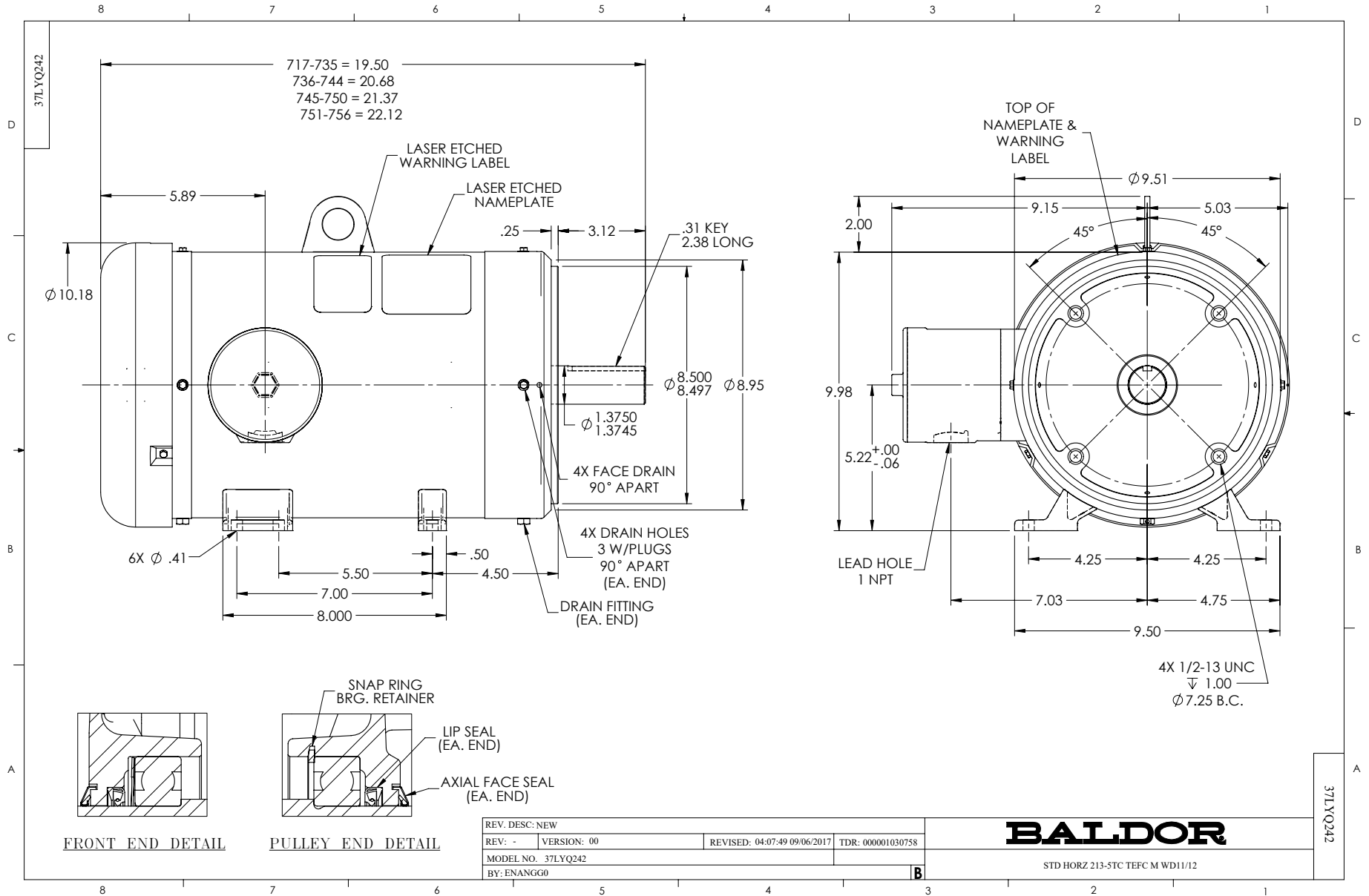
Typical performance - not guaranteed values.

15 HP 3 PH 60 HZ 3500 RPM 460 V 3756M

TORQUES(LB-FT): PO=129 PU=62.1 LR=81.4 LRA=187



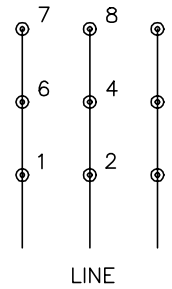
8/4/2020 ACPERF, record # 43026



CD0180



LOW VOLTAGE
(2D)



HIGH VOLTAGE
(1D)



NOTES:

1. INTERCHANGE ANY TWO LINE LEADS TO REVERSE ROTATION.
2. OPTIONAL THERMOSTATS ARE PROVIDED WHEN SPECIFIED.
3. ACTUAL NUMBER OF INTERNAL PARALLEL CIRCUITS MAY BE A MULTIPLE OF THOSE SHOWN ABOVE.
4. LEAD COLORS ARE OPTIONAL. LEADS MUST ALWAYS BE NUMBERED AS SHOWN.

CD0180

REV. DESC: ADD CLASS CONN00000007		
REV. LTR: D	VERSION: 01	TDR: 000001099922
FILE: \AAA\00005\148	REVISED: 10:25:29 02/19/2019	BY: ENBRIRO
MTL: -	© □	

BALDOR - RELIANCE®

3PH, DV, 9 LEADS, DELTA CONNECTION

SH 1 of 1